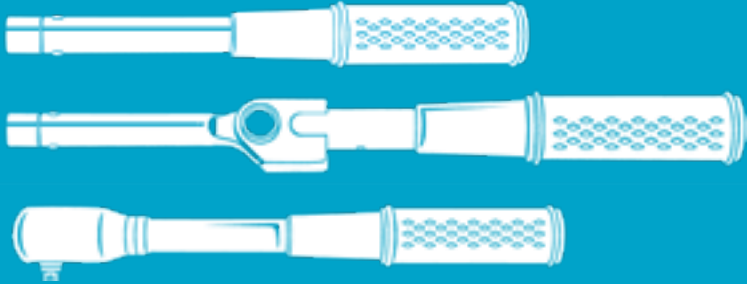


# *Mechanical wrench Series*



*Atlas Copco*





# Mechanical wrench series

The mechanical wrenches in the new Atlas Copco Saltus product line form the basis for manual tightening. They enable you to find the optimal solution for your individual tightening situation regardless whether you are working in assembly lines, rework or repair and maintenance, and even when limited operating space is available.

The wrenches are also the perfect backup strategy for your controlled assembly technology.

With regard to workplace equipment and costs, manual tightening wrenches are often more efficient and increase your productivity. The easy handling has earned wide acceptance among operators.


Our different wrench types offer the right strategy for nearly any application.



CWR 'Click' wrenches



BWR 'Breaking' wrenches



SWR 'Slipping' wrenches

# CWR 'click' wrench series



Scale 1:1 of CWR-20



The torque wrenches in our CWR series provide the distinctive "Click" which is a very clear feedback when reaching the pre-set torque value. The repeatability of  $\pm 4\%$  makes them perfect for use in assembly lines.

Upgraded with the Microswitch adaptor the CWR wrenches can support control functionalities as batch counting and line control

For an adjustment of the pre-set value an optional setting key is available.

- Wide range from 2 Nm up to 300 Nm
- Very small sizes ideal for tightening in limited space
- Repeatability of  $\pm 4\%$
- Easy and safe adjusting and handling
- Standard drive (9x12 or 14x18) for a wide range of suitable end fittings (Refer to page 10–15).

CWR – 'Click' wrench series

Type	Torque Nm	Range ft.lb
CWR-20	03-20	2.2-14.8
CWR-25	02-25	1.5-18.4
CWR-50	05-50	3.7-37
CWR-85	15-85	11-62.7
CWR-120	50-120	37-88.5
CWR-200	50-200	37-148
CWR-300	60-300	44.2-221



Easy handling

A single 'Click' indicates reaching the pre-set torque value.

Standard drive

Length mm	Weight g	Ø mm	Drive	Ordering No.
129	248	21	9x12	8439 0041 00
174	288	21	9x12	8439 0041 01
236	466	21	9x12	8439 0041 02
305	576	21	9x12	8439 0041 03
349	666	24	9x12	8439 0041 04
419	916	30x26	14x18	8439 0041 05
685	1366	32x28	14x18	8439 0041 06

Accessories	Weight
Microswitch adaptor	4027 5015 90
Helix cable for Microswitch	8439 0030 00
MWR / CWR protection cap 5PCS (blue)	4027 5022 20
MWR / CWR protection cap 5PCS (green)	4027 5022 21
MWR / CWR protection cap 5PCS (red)	4027 5022 22
MWR / CWR protection cap 5PCS (Colormix)	4027 5022 23
MWR / CWR protection cap 5PCS (gold)	4027 5022 24
MWR / CWR protection cap 5PCS (black)	4027 5022 25
Setting key	169 4027 5013 96

22°  
Breaking  
angle

Extremely high  
accuracy

BWR-D:  
New square  
input drive

SALTUS  
1303-17-10W

**BWR – 'Breaking' wrench series**

Type	Torque Range		Length mm	Weight g	Ø mm	Drive	Ordering No.
	Nm	ft.lb					
BWR-20 D	02-20	1.5-14.8	275	540	21	9 x 12	8439 0042 20
BWR-35 D	05-35	3.7-25.8	275	750	21	9 x 12	8439 0042 21
BWR-100 D	20-100	14.8-74	410	1232	24	9 x 12	8439 0042 22
BWR-240 D	80-240	59-177	677	2529	36	14 x 18	8439 0042 23
BWR-440 D	140-440	103.0-324.5	857	4690	36	14 x 18	8439 0042 24
BWR-750	300-750	221-553	961	6400	20x41	BWR-750	8439 0042 05
BWR-1300	500-1300	369-959	1256	8140	21x45	BWR-1300	8439 0042 06
BWR-2000	800-2000	590-1475	1982	13450	21x45	BWR-2000	8439 0042 07
<b>Accessories</b>							
Microswitch adaptor							4027 5015 90
Helix cable for Microswitch							8439 0030 00
Setting key BWR 100 (D)							4027 5006 10
Setting key BWR 240 (D)							4027 5006 11
Setting key BWR 440 (D)							4027 5006 12
Setting key BWR 750 up to BWR 2000							4027 5006 13



Ergonomic  
design

# *BWR 'breaking' wrench series*

The torque wrenches in our BWR series are primarily used in professional industrial environments. The possibility of over-tightening is significantly reduced due to a 22° breaking-angle of the unique BWR mechanism. Therefore, the BWR wrenches are very well-suited for use in assembly lines as well as for repair and maintenance.

Upgraded with the Microswitch adaptor the CWR wrenches can support control functionalities as batch counting and line control

You can profit from a wide range of end fittings which are quickly changed. Coupled with our Atlas Copco end fittings for the BWR series, you will obtain a high degree of accuracy in your tightening process (Refer to page 16–23).

For an adjustment of the pre-set value an optional setting key is available (Refer to page 23).

- High process reliability as over-tightening is significantly reduced due to the 22° breaking angle
- Wide range of wrenches from 2Nm up to 2000 Nm
- Extremely high durability and high repeatability of  $\pm 4\%$
- Robust construction
- Easy and safe adjusting



**NEW!**  
Standardized  
square input size  
up to BWR-440 D



# SWR 'slipping' wrench series

The torque wrenches in the SWR series are "automatically triggered" once the pre-set torque value is reached. The Camover-technology completely avoids over-tightening. After triggering, the SWR wrench is again ready to use. The integrated ratchet function ensures you controlled clockwise tightening.

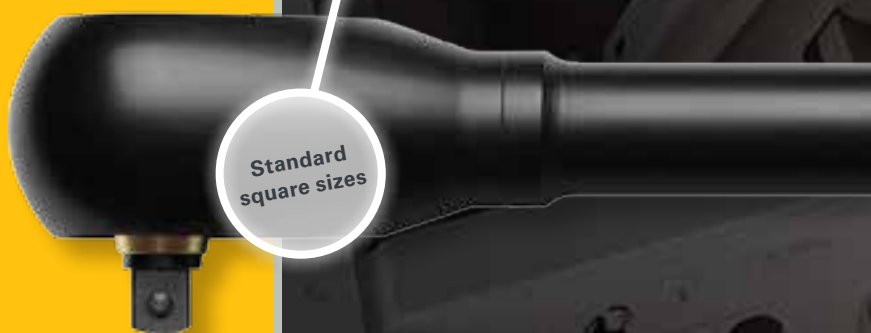


Camover-technology avoids over-tightening

The high repeating accuracy with a tolerance of  $\pm 4\%$  makes the SWR wrenches ideal for assembly lines for extreme continuous operation. For an adjustment of the pre-set value an optional setting key is available (Refer to page 23).

- Torque range from 5Nm up to 110 Nm
- High process reliability as camover mechanism avoids over-tightening
- Overloading of the wrench itself is impossible
- Repeatability of  $\pm 4\%$
- Robust construction
- Easy and safe adjusting
- 3/8" (SWR-30 / SWR-60) respectively 1/2" (SWR-110) ratchet drive allows use of standard sockets. You will find a wide range in the Atlas Copco PMI 9833 2018 01 Sockets and Bits for Industrial Power Tools

Standard square sizes







Ergonomic design

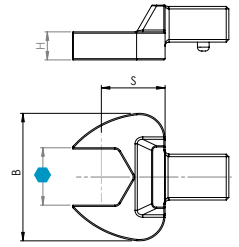
Atlas Copco

**SWR - 'Slipping' wrench series**

Type	Torque Range		Length mm	Weight g	Drive	Ordering No.
	Nm	ft.lb				
SWR-30	05-30	3.7-22	269	640	3/8"	8439 0043 00
SWR-60	15-60	11-44	354	1050	3/8"	8439 0043 01
SWR-110	40-110	29.5-96	453	1900	1/2"	8439 0043 02

# End fittings CWR and BWR-D

## Open End



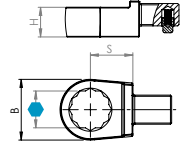
Open End 9x12						
● mm	B mm	H mm	S mm	g	max Nm	Ordering No.
7	22	5	17.5	40	7	4027 5011 00
8	22	5	17.5	39	10	4027 5011 01
9	26	5.5	17.5	38	14	4027 5011 02
10	26	5.5	17.5	42	20	4027 5011 03
11	26	5.5	17.5	41	25	4027 5011 04
12	30	7	17.5	43	32	4027 5011 05
13	30	7	17.5	48	40	4027 5011 06
14	35	8	17.5	52	50	4027 5011 07
15	35	8	17.5	51	60	4027 5011 08
16	38	8.5	17.5	58	70	4027 5011 09
17	38	8.5	17.5	60	80	4027 5011 10
18	42	9	20	71	100	4027 5011 11
19	42	9	20	74	115	4027 5011 12
20	42	9	20	76	115	4027 5011 13
21	46	11	22	95	115	4027 5011 14
22	46	11	22	95	115	4027 5011 15
24	48	11	25	106	130	4027 5011 16
27	58	13	30	235	150	4027 5011 17
32	64	15	40	267	190	4027 5011 18

Open End 14x18						
● mm	B mm	H mm	S mm	g	max Nm	Ordering No.
13	30	7	25	128	40	4027 5011 21
14	35	8	25	129	50	4027 5011 22
15	35	8	25	132	60	4027 5011 23
16	38	9	25	140	70	4027 5011 24
17	38	9	25	136	80	4027 5011 25
18	42	10	25	147	90	4027 5011 26
19	42	10	25	145	95	4027 5011 27
20	42	10	25	155	100	4027 5011 28
21	50	11	25	171	30	4027 5011 29
22	50	11	25	165	150	4027 5011 30
24	53	12	25	167	180	4027 5011 31
27	60	13	30	219	220	4027 5011 32
28	60	13	30	222	250	4027 5011 33
29	60	13	30	222	270	4027 5011 34
30	66	14	30	245	300	4027 5011 35
32	66	14	32.5	246	300	4027 5011 36
34	66	14	32.5	239	300	4027 5011 37
36	66	14	32.5	275	300	4027 5011 38

Open End 9x12						
● in	B mm	H mm	S mm	g	max Nm	Ordering No.
1/4	22	5	17.5	37	7	4027 5010 00
5/16	22	5	17.5	36	10	4027 5010 01
3/8	26	5.5	17.5	38	20	4027 5010 02
7/16	26	5.5	17.5	38	25	4027 5010 03
1/2	30	7	17.5	47	32	4027 5010 04
9/16	34	8	17.5	50	50	4027 5010 05
5/8	38	8.5	17.5	56	70	4027 5010 06
11/16	38	8.5	17.5	57	80	4027 5010 07
3/4	42	9	20	71	115	4027 5010 08

Open End 14x18						
● in	B mm	H mm	S mm	g	max Nm	Ordering No.
7/16	30	7	25	127	40	4027 5010 50
1/2	30	7	25	127	40	4027 5010 51
9/16	35	8	25	132	50	4027 5010 52
5/8	38	9	25	141	70	4027 5010 53
11/16	38	9	25	136	80	4027 5010 54
3/4	42	10	25	144	95	4027 5010 55
13/16	50	11	25	160	150	4027 5010 56
7/8	50	11	25	158	150	4027 5010 57
15/16	53	12	25	176	180	4027 5010 58
1	53	12	25	172	180	4027 5010 59
1.1/8	60	13	30	223	220	4027 5010 60

## Box End



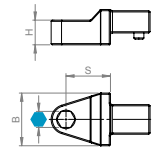
Box End 9x12						
● mm	B mm	H mm	S mm	g	max Nm	Ordering No.
7	13	8	17.5	38	25	4027 5011 50
8	13.5	8	17.5	37	35	4027 5011 51
9	16	8	17.5	35	40	4027 5011 52
10	18	9	17.5	40	55	4027 5011 53
11	18.5	9	17.5	44	70	4027 5011 54
12	20.5	11	17.5	41	85	4027 5011 55
13	21.5	11	17.5	49	100	4027 5011 56
14	25	12	17.5	55	115	4027 5011 57
15	25	12	17.5	52	120	4027 5011 58
16	26	12	17.5	54	120	4027 5011 59
17	27	13	17.5	59	120	4027 5011 60
18	28	13	17.5	56	120	4027 5011 61
19	30.5	13	17.5	65	120	4027 5011 62
21	33	15	17.5	71	120	4027 5011 63
22	34.5	15	17.5	74	120	4027 5011 64

Box End 9x12						
● in	B mm	H mm	S mm	g	max Nm	Ordering No.
1/4	13.5	8	17.5	39	25	4027 5010 13
5/16	13.5	8	17.5	38	35	4027 5010 14
3/8	18	8	17.5	41	55	4027 5010 15
7/16	18	9	17.5	41	70	4027 5010 16
1/2	22	12	17.5	51	100	4027 5010 17
9/16	25	12	17.5	57	115	4027 5010 18
5/8	27	13	17.5	61	120	4027 5010 19
11/16	27	13	17.5	57	120	4027 5010 20
3/4	30	13	17.5	62	120	4027 5010 21
13/16	34	14.5	17.5	75	120	4027 5010 22
7/8	34	15	20	77	120	4027 5010 23

Box End 14x18						
● mm	B mm	H mm	S mm	g	max Nm	Ordering No.
13	22.5	11	25	130	100	4027 5011 67
14	23	11	25	123	110	4027 5011 68
15	24	11	25	128	120	4027 5011 69
16	25.5	12	25	133	140	4027 5011 70
17	27	12	25	135	160	4027 5011 71
18	29	13	25	134	185	4027 5011 72
19	30.5	13	25	138	210	4027 5011 73
20	33	13	25	140	230	4027 5011 74
21	33	15	25	144	260	4027 5011 75
22	34.5	15	25	145	300	4027 5011 76
24	37.5	15	25	153	350	4027 5011 77
27	42.5	17	25	162	450	4027 5011 78
30	46	19	25	182	550	4027 5011 79
32	47.5	19	25	181	650	4027 5011 80
34	52	19	28	210	650	4027 5011 81
36	54	19	28	203	700	4027 5011 82
41	60	20	30	240	750	4027 5011 83

Box End 14x18						
● in	B mm	H mm	S mm	g	max Nm	Ordering No.
1/2	30	11	25	134	100	4027 5010 70
9/16	30	11	25	133	110	4027 5010 71
5/8	30	12	25	135	140	4027 5010 72
11/16	30	12	25	136	160	4027 5010 73
3/4	31	12	25	145	210	4027 5010 74
13/16	34	15	25	159	260	4027 5010 75
7/8	35	15	25	156	300	4027 5010 76

## Bits Holder

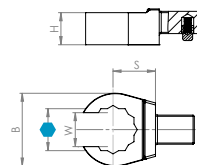


Bits Holder 9x12					
● in	B mm	H mm	S mm	g	Ordering No.
1/4	14	10	17.5	45	4027 5012 11
5/16	16	12.5	17.5	47	4027 5012 10

Bits Holder 14x18					
● in	B mm	H mm	S mm	g	Ordering No.
5/16	16	12.5	25	112	4027 5012 13

# End fittings CWR and BWR-D

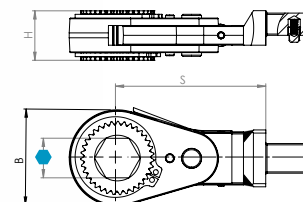
## Flared End



Flared End 9x12							
● mm	B mm	H mm	S mm	W mm	g	max Nm	Ordering No.
10	21.5	11	17.5	7.1	57	20	4027 5011 90
11	22.5	11	17.5	8.6	55	25	4027 5011 91
12	24.5	12	17.5	9	59	32	4027 5011 92
13	26	13	17.5	10	55	40	4027 5011 93
14	27	13	17.5	11	60	50	4027 5011 94
15	27	13	17.5	12	60	50	4027 5011 95
16	30.5	13	17.5	13	65	80	4027 5011 96
17	31.5	13	17.5	14	64	82	4027 5011 97
18	33	15	17.5	15	74	100	4027 5011 98
19	34	15	17.5	16	80	115	4027 5011 99
21	38.5	15	20	17	88	120	4027 5012 00
22	39.5	15	20	17	92	120	4027 5012 01
24	40	15	20	18	75	120	4027 5012 02
27	45	17	25	20	120	140	4027 5012 03

Flared End 9x12							
● in	B mm	H mm	S mm	W mm	g	max Nm	Ordering No.
3/8	18	8	17.5	7.1	39	20	4027 5010 30
7/16	21	12	17.5	8.6	50	25	4027 5010 31
1/2	26	13	17.5	10	61	32	4027 5010 32
9/16	27	13	17.5	11	58	50	4027 5010 33
5/8	30	13	17.5	14	62	80	4027 5010 34
11/16	30	13	17.5	14	58	82	4027 5010 35
3/4	34	15	17.5	15.8	71	115	4027 5010 36

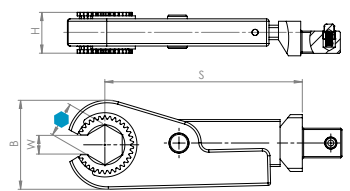
## Hexagon Ratchet



Hexagon Ratchet 9x12						
● mm	B mm	H mm	S mm	g	max Nm	Ordering No.
10	28	13.5	51	95	25	4027 5012 30
11	28	13.5	51	95	25	4027 5012 31
12	28	13.5	51	95	25	4027 5012 32
13	28	13.5	51	95	25	4027 5012 33
14	32	16	56	140	35	4027 5012 34
15	32	16	56	140	35	4027 5012 35
16	39	20	61	205	70	4027 5012 36
17	39	20	61	205	70	4027 5012 37
18	39	20	61	205	70	4027 5012 38
19	39	20	61	205	70	4027 5012 39
21	45	23	66	290	85	4027 5012 40
22	45	23	66	290	85	4027 5012 41
24	45	23	66	290	85	4027 5012 42

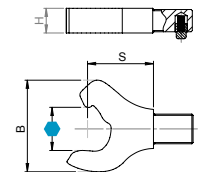
## Open Hexagon Ratchet

Open Hexagon Ratchet 9x12										
mm	B mm	H mm	S mm	W mm	g	max Nm	AF mm	Teeth	Ordering No.	
8	30	16.5	48	5.1	90	15	8	33	4027 5012 50	
9	30	16.5	48	6.3	90	15	9	33	4027 5012 51	
10	30	16.5	48	6.3	89	15	10	33	4027 5012 52	
11	30	16.5	48	6.3	89	15	11	33	4027 5012 53	
12	36	16.5	81	7.1	200	18	12	34	4027 5012 54	
13	36	16.5	81	7.6	200	18	13	34	4027 5012 55	
14	36	16.5	81	8	200	18	14	34	4027 5012 56	
15	44	20.5	83	9.1	280	45	15	35	4027 5012 57	
16	44	20.5	83	9.6	280	45	16	35	4027 5012 58	
17	44	20.5	83	10	280	45	17	35	4027 5012 59	
18	44	20.5	83	10.5	280	45	18	35	4027 5012 60	
19	44	20.5	83	10.5	280	45	18	35	4027 5012 61	



Open Hexagon Ratchet with reinforced bottom 9x12										
mm	B mm	H mm	S mm	W mm	g	max Nm	AF mm	Teeth	Ordering No.	
10	30	16.5	48	6.3	91	15	10	33	4027 5012 63	
11	30	16.5	48	6.3	91	15	11	33	4027 5012 64	
12	30	16.5	48	7.1	91	15	12	33	4027 5012 65	
13	30	20.5	48	7.6	91	15	13	33	4027 5012 66	

## Open End with Ratchet Function



Open End with Ratchet Function 9x12						
mm	B mm	H mm	S mm	g	Ordering No.	
10	22.5	10	17.5	34	4027 5012 80	
11	24.5	10	21	39	4027 5012 81	
12	26.7	10	21	42	4027 5012 82	
13	30	10	23	49	4027 5012 83	
14	30.5	10	25.5	55	4027 5012 84	
15	32	10	27	60	4027 5012 85	
16	35	10	28	65	4027 5012 86	
17	37	10	29	68	4027 5012 87	
18	38	10	32.5	78	4027 5012 88	
19	41	10	33	90	4027 5012 89	
21	46.5	10	35	100	4027 5012 90	
22	46.5	10	35	97	4027 5012 91	
24	50	10	37.5	115	4027 5012 92	
27	57	10	47.5	156	4027 5012 93	
30	62	10	52.5	182	4027 5012 94	
32	67	12	52.5	234	4027 5012 95	

Open End with Ratchet Function 14x18						
mm	B mm	H mm	S mm	g	Ordering No.	
17	37	16	28	125	4027 5012 98	
18	41	16	32	12	4027 5012 99	
19	41	16	32.5	130	4027 5013 00	
21	46.5	16	35	150	4027 5013 01	
22	46.6	16	40	203	4027 5013 02	
24	50	16	41	223	4027 5013 03	
27	57	16	47	280	4027 5013 04	
30	63	16	52	319	4027 5013 05	
32	67	16	53	345	4027 5013 06	
36	75	16	54	395	4027 5013 07	

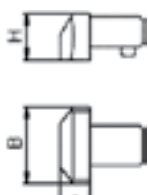
## Setting Key CWR

	g	Ordering No.
Setting Key CWR	169	4027 5013 96



## End fittings CWR and BWR-D

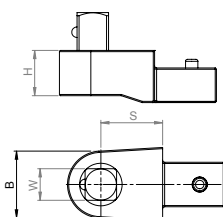
### Blank End



Blank End 9x12					
	B mm	H mm	S mm	g	Ordering No.
	23	14	9	30	4027 5012 20
Assembled	23	14	9	30	4027 5012 21

Blank End 14x18					
	B mm	H mm	S mm	g	Ordering No.
	30	21	13	98	4027 5012 23
Assembled	30	21	13	98	4027 5012 24

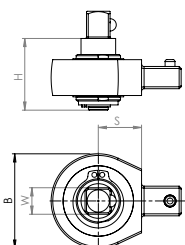
### Fixed Square



Fixed Square 9x12							
in	B mm	H mm	S mm	g	max Nm	Ordering No.	
1/4	20	14	17.5	76	40	4027 5013 20	
3/8	20	14	17.5	82	80	4027 5013 21	
1/2	20	14	17.5	71	100	4027 5013 22	

Fixed Square 14x18							
in	B mm	H mm	S mm	g	max Nm	Ordering No.	
1/2	27	18	25	203	300	4027 5013 24	
3/4	40	25	25	396	650	4027 5013 25	

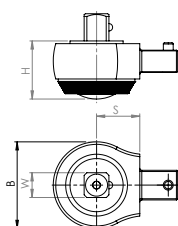
### Non-reversible Ratchet End



Non-reversible Ratchet End 9x12								
in	B mm	H mm	S mm	g	teeth	max Nm	Ordering No.	
3/8	38	29.5	17.5	140	24	80	4027 5013 30	
1/2	38	29.5	17.5	180	24	100	4027 5013 31	

Non-reversible Ratchet End 14x18								
in	B mm	H mm	S mm	g	teeth	max Nm	Ordering No.	
1/2	44	29.5	25	230	24	300	4027 5013 33	

### Reversible Ratchet End

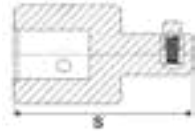


Reversible Ratchet End 9x12 (with Quickrelease)								
in	B mm	H mm	S mm	g	teeth	max Nm	Ordering No.	
1/4	27	27	17.5	68	52	50	4027 5013 40	
3/8	36.5	25	17.5	140	52	100	4027 5013 41	
1/2	33.5	37	17.5	150	52	120	4027 5013 42	

Reversible Ratchet End 14x18 (with Quickrelease)								
in	B mm	H mm	S mm	g	teeth	max Nm	Ordering No.	
1/2	41	26	25	320	52	250	4027 5013 44	

Reversible Ratchet End 14x18 (without Quickrelease)								
in	B mm	H mm	S mm	g	teeth	max Nm	Ordering No.	
1/2	41	26	25	320	52	300	4027 5013 50	
3/4	62	32	46	865	72	800	4027 5013 45	

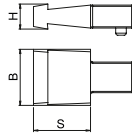
## Belknap Adapter



Belknap adapter 9x12			
Type	S mm	g	Ordering No.
J-Shank	24	68	4027 5016 90
Y-Shank	29	71	4027 5016 91
X-Shank	31	86	4027 5016 92
Z- Shank	56	314	4027 5016 93

Belknap adapter 14x18			
Type	S mm	g	Ordering No.
J-Shank	24	105	4027 5017 00
Y-Shank	29	104	4027 5017 01
X-Shank	31	121	4027 5017 02
Z- Shank	56	349	4027 5017 03

## Connectors for Dovetail Inserts



Connectors for Dovetail Inserts					
	B mm	H mm	S mm	g	Ordering No.
9x12	22	10	21.5	39	4027 5013 90
14x18	29	10	26.5	92	4027 5013 91

## Microswitch adaptor for CWR and BWR-D series



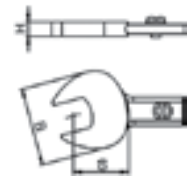
Microswitch Adaptor for CWR and BWR-D wrenches				
	B mm	H mm	g	Ordering No.
Microswitch				4027 5015 90
Helix cable				8439 0030 00



Protection caps accessories	
MWR / CWR protection cap 5PCS (blue)	4027 5022 20
MWR / CWR protection cap 5PCS (green)	4027 5022 21
MWR / CWR protection cap 5PCS (red)	4027 5022 22
MWR / CWR protection cap 5PCS (Colormix)	4027 5022 23
MWR / CWR protection cap 5PCS (gold)	4027 5022 24
MWR / CWR protection cap 5PCS (black)	4027 5022 25

# End fittings BWR

## Open End



BWR 20/35						
● mm	B mm	H mm	S mm	g	max Nm	Ordering No.
7	24	5.5	17.5	23	13	4027 5000 00
8	24	5.5	17.5	25	13	4027 5000 01
9	24	5.5	17.5	25	13	4027 5000 02
10	30	6	24	31	20	4027 5000 03
11	30	6	24	31	24	4027 5000 04
12	33	6	25	31	29	4027 5000 05
13	33	6	25	34	40	4027 5000 06
14	33	6	25	34	45	4027 5000 07
15	35	6	28	34	45	4027 5000 08
16	35	7	28	50	50	4027 5000 09
17	38	7	30	60	60	4027 5000 10
18	38	7	31	60	65	4027 5000 11
19	38	7	31	60	70	4027 5000 12
21	43	7	35	61	95	4027 5000 13
22	43	7	35	61	95	4027 5000 14
24	46	10	35	61	95	4027 5000 15
27	46	10	40	61	95	4027 5000 16

BWR 100						
● mm	B mm	H mm	S mm	g	max Nm	Ordering No.
13	40	7.5	25	75	45	4027 5000 30
14	40	7.5	25	75	45	4027 5000 31
15	40	7.5	25	75	50	4027 5000 32
16	45	10	28	90	55	4027 5000 33
17	45	10	28	110	65	4027 5000 34
18	45	10	28	110	65	4027 5000 35
19	45	10	28	115	75	4027 5000 36
21	46	10	32	115	75	4027 5000 37
22	46	10	32	115	80	4027 5000 38
24	46	10	32	120	100	4027 5000 39
27	55	10	36	120	100	4027 5000 40

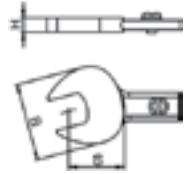
BWR 240						
● mm	B mm	H mm	S mm	g	max Nm	Ordering No.
16	53	10	34	210	85	4027 5000 60
17	53	10	44	210	85	4027 5000 61
18	53	10	44	210	85	4027 5000 62
19	53	10	44	210	85	4027 5000 63
21	60	10	46	210	85	4027 5000 64
22	60	13	48	290	170	4027 5000 65
24	61	13	41	350	175	4027 5000 66
27	64	15	50	360	180	4027 5000 67

BWR 20/35						
● in	B mm	H mm	S mm	g	max Nm	Ordering No.
1/4	24	5.5	17.5	23	13	4027 5006 50
5/16	24	5.5	17.5	25	13	4027 5006 51
3/8	24	5.5	17.5	25	13	4027 5006 52
7/16	30	6	24	31	24	4027 5006 53
1/2	33	6	25	34	40	4027 5006 54
9/16	35	6	28	34	45	4027 5006 55
5/8	35	7	28	50	50	4027 5006 56
11/16	38	7	31	60	65	4027 5006 57
3/4	38	7	31	60	70	4027 5006 58

BWR 100						
● in	B mm	H mm	S mm	g	max Nm	Ordering No.
1/2	40	7.5	25	75	45	4027 5006 70
9/16	40	7.5	25	75	50	4027 5006 71
5/8	45	10	28	90	55	4027 5006 72
11/16	45	10	28	110	65	4027 5006 73
3/4	45	10	28	115	75	4027 5006 74
13/16	46	10	32	115	75	4027 5006 75
7/8	46	10	32	115	80	4027 5006 76
15/16	46	10	32	120	100	4027 5006 77
1	55	10	36	120	100	4027 5006 78
1 1/8	61	12	43	227	130	4027 5006 79

BWR 240						
● in	B mm	H mm	S mm	g	max Nm	Ordering No.
5/8	53	10	34	210	85	4027 5006 90
11/16	53	10	44	210	85	4027 5006 91
3/4	53	10	44	210	85	4027 5006 92
13/16	60	10	46	210	85	4027 5006 93
7/8	60	13	48	290	170	4027 5006 94
15/16	63	14	59	480	360	4027 5006 95
1	72	15	60	580	440	4027 5006 96
1 1/8	75	15	60	595	440	4027 5006 97





BWR 440						
● mm	B mm	H mm	S mm	g	max Nm	Ordering No.
17	55	12	58	375	190	4027 5000 90
18	55	12	58	375	190	4027 5000 91
19	55	12	58	375	190	4027 5000 92
21	62	12	59	440	280	4027 5000 93
22	62	12	59	440	280	4027 5000 94
24	63	14	59	480	360	4027 5000 95
27	72	15	60	580	440	4027 5000 96
30	75	15	60	595	440	4027 5000 97
32	78	15	60	650	440	4027 5000 98
34	82	17	60	670	440	4027 5000 99
36	82	17	62	670	440	4027 5001 00
41	87	20	62	685	440	4027 5001 01

BWR 750						
● mm	B mm	H mm	S mm	g	max Nm	Ordering No.
21	62	12	58	600	300	4027 5001 20
22	62	12	58	600	300	4027 5001 21
24	70	14	58	620	320	4027 5001 22
27	75	15	58	700	360	4027 5001 23
30	80	15	58	820	420	4027 5001 24
32	82	17	58	850	490	4027 5001 25
34	86	17	62	860	570	4027 5001 26
36	86	17	62	860	570	4027 5001 27
41	92	20	64	950	620	4027 5001 28
46	97	22	66	980	630	4027 5001 29

BWR 1300/2000						
● mm	B mm	H mm	S mm	g	max Nm	Ordering No.
24	70	14	53	950	350	4027 5001 50
27	75	15	53	960	480	4027 5001 51
30	82	17	53	1050	600	4027 5001 52
32	82	17	61	1150	750	4027 5001 53
34	86	18	64	1200	890	4027 5001 54
36	86	18	65	1200	890	4027 5001 55
41	92	20	77	1650	1150	4027 5001 56
46	97	22	80	1800	1450	4027 5001 57
50	104	22	82	1900	1750	4027 5001 58
55	110	22	83	1985	1800	4027 5001 59
60	115	22	86	2000	1850	4027 5001 60
75	170	25	113	3500	2000	4027 5001 61

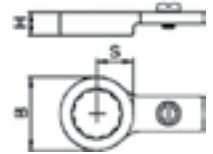
BWR 440							
● in	B mm	H mm	S mm	g	max Nm	Ordering No.	
5/8	55	12	58	375	190	4027 5007 10	
11/16	55	12	58	375	190	4027 5007 11	
3/4	55	12	58	375	190	4027 5007 12	
13/16	62	12	59	440	280	4027 5007 13	
7/8	62	12	59	440	280	4027 5007 14	
15/16	63	14	59	480	360	4027 5007 15	
1	72	15	60	580	440	4027 5007 16	
1 1/8	75	15	60	595	440	4027 5007 17	

BWR 750							
● in	B mm	H mm	S mm	g	max Nm	Ordering No.	
13/16	62	12	58	600	300	4027 5007 30	
7/8	62	12	58	600	300	4027 5007 31	
15/16	70	14	58	620	320	4027 5007 32	
1	75	15	58	700	360	4027 5007 33	
1 1/8	80	15	58	820	420	4027 5007 34	

BWR 1300/2000							
● in	B mm	H mm	S mm	g	max Nm	Ordering No.	
15/16	70	14	53	950	350	4027 5007 40	
1	75	15	53	960	480	4027 5007 41	
1 1/8	82	17	53	1050	600	4027 5007 42	

# End fittings BWR

## Box End



BWR 20/35						
● mm	B mm	H mm	S mm	g	max Nm	Ordering No.
7	16	6	9.5	17	25	4027 5001 80
8	16	6	9.5	17	25	4027 5001 81
9	18	6	10.5	18	32	4027 5001 82
10	19	7	11.0	21	38	4027 5001 83
11	20	7	11.5	21	50	4027 5001 84
12	21	7	12.0	21	60	4027 5001 85
13	22	8	12.5	24	75	4027 5001 86
14	23	8	13.0	24	85	4027 5001 87
15	25	8	14.0	27	85	4027 5001 88
16	27	8	15.0	30	85	4027 5001 89
17	27	8	15.0	28	85	4027 5001 90
18	29	8	16.0	32	85	4027 5001 91
19	29	8	16.0	30	85	4027 5001 92
21	34	10	18.5	48	85	4027 5001 93
22	34	10	18.5	45	85	4027 5001 94
24	37	10	20.0	51	85	4027 5001 95

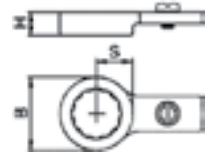
BWR 100						
● mm	B mm	H mm	S mm	g	max Nm	Ordering No.
13	23	10	14.0	58	75	4027 5002 10
14	25	10	15.0	64	85	4027 5002 11
15	26	10	15.5	65	100	4027 5002 12
16	28	12	16.5	76	100	4027 5002 13
17	28	12	16.5	73	100	4027 5002 14
18	30	12	17.5	78	100	4027 5002 15
19	30	12	17.5	75	100	4027 5002 16
21	32	12	18.5	76	100	4027 5002 17
22	34	12	19.5	83	100	4027 5002 18
24	37	14	21.0	99	100	4027 5002 19

BWR 240						
● mm	B mm	H mm	S mm	g	max Nm	Ordering No.
16	33	12	31	223	135	4027 5002 40
17	33	12	31	220	135	4027 5002 41
18	33	12	31	217	150	4027 5002 42
19	33	12	31	213	150	4027 5002 43
21	38	12	31	228	200	4027 5002 44
22	38	12	31	225	200	4027 5002 45
24	40	14	31	238	240	4027 5002 46
27	44	14	31	247	240	4027 5002 47

BWR 20/35						
● in	B mm	H mm	S mm	g	max Nm	Ordering No.
1/4	16	6	9.5	17	25	4027 5007 50
5/16	16	6	9.5	16	25	4027 5007 51
3/8	18	6	10.5	18	32	4027 5007 52
7/16	20	7	11.5	21	50	4027 5007 53
1/2	22	8	12.5	24	75	4027 5007 54
9/16	25	8	14.0	28	85	4027 5007 55
5/8	27	8	15.0	31	85	4027 5007 56
11/16	29	8	16.0	33	85	4027 5007 57
3/4	29	8	16.0	29	85	4027 5007 58

BWR 100						
● in	B mm	H mm	S mm	g	max Nm	Ordering No.
1/2	23	10	14.0	61	75	4027 5007 70
9/16	26	10	15.5	67	100	4027 5007 71
5/8	28	12	16.5	76	100	4027 5007 72
11/16	30	12	17.5	80	100	4027 5007 73
3/4	30	12	17.5	75	100	4027 5007 74
13/16	32	12	18.5	78	100	4027 5007 75
7/8	34	12	19.5	82	100	4027 5007 76
15/16	37	14	21.0	100	100	4027 5007 77
1	40	12	22.5	121	100	4027 5007 78

BWR 240						
● in	B mm	H mm	S mm	g	max Nm	Ordering No.
5/8	33	12	31	223	135	4027 5007 90
11/16	33	12	31	219	150	4027 5007 91
3/4	33	12	31	213	150	4027 5007 92
13/16	38	12	31	230	200	4027 5007 93
7/8	38	12	31	224	200	4027 5007 94
15/16	40	14	31	238	240	4027 5007 95
1	44	14	31	256	240	4027 5007 96



BWR 440						
● mm	B mm	H mm	S mm	g	max Nm	Ordering No.
17	36	12	56	300	190	4027 5002 70
18	36	12	56	300	190	4027 5002 71
19	40	12	56	300	190	4027 5002 72
21	40	14	56	315	280	4027 5002 73
22	40	14	56	315	280	4027 5002 74
24	43	14	56	320	420	4027 5002 75
27	47	14	56	335	440	4027 5002 76
30	52	14	56	335	440	4027 5002 77
32	54	14	56	365	440	4027 5002 78
34	58	15	56	375	440	4027 5002 79
36	60	15	56	385	440	4027 5002 80
41	62	15	56	395	440	4027 5002 81
44	72	16	56	483	460	4027 5002 82

BWR 750						
● mm	B mm	H mm	S mm	g	max Nm	Ordering No.
21	40	14	58	450	320	4027 5003 00
22	40	14	58	470	320	4027 5003 01
24	43	14	58	500	480	4027 5003 02
27	47	16	58	520	480	4027 5003 03
30	54	16	58	535	700	4027 5003 04
32	56	16	58	565	750	4027 5003 05
34	60	19	58	575	750	4027 5003 06
36	60	19	58	575	750	4027 5003 07
38	60	19	58	565	750	4027 5003 08
41	65	19	58	585	750	4027 5003 09
46	69	19	58	600	750	4027 5003 10

BWR 1300/2000						
● mm	B mm	H mm	S mm	g	max Nm	Ordering No.
24	52	18	58	750	520	4027 5003 30
27	56	18	58	760	560	4027 5003 31
30	60	18	58	800	740	4027 5003 32
32	62	18	58	820	950	4027 5003 33
34	62	18	58	850	1200	4027 5003 34
36	70	18	58	850	1200	4027 5003 35
41	70	18	58	940	1800	4027 5003 36
46	78	20	58	1080	2000	4027 5003 37
50	85	22	58	1180	2000	4027 5003 38
55	90	22	58	1250	2000	4027 5003 39
60	95	22	58	1300	2000	4027 5003 40

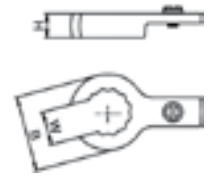
BWR 440						
● in	B mm	H mm	S mm	g	max Nm	Ordering No.
5/8	36	12	56	300	190	4027 5008 10
11/16	36	12	56	300	190	4027 5008 11
3/4	40	12	56	300	190	4027 5008 12
13/16	40	14	56	315	280	4027 5008 13
7/8	40	14	56	315	280	4027 5008 14
15/16	43	14	56	320	420	4027 5008 15
1	47	14	56	335	440	4027 5008 16

BWR 750						
● in	B mm	H mm	S mm	g	max Nm	Ordering No.
13/16	40	14	58	450	320	4027 5008 30
7/8	40	14	58	470	320	4027 5008 31
15/16	43	14	58	500	480	4027 5008 32
1	47	16	58	520	480	4027 5008 33

BWR 1300/2000						
● in	B mm	H mm	S mm	g	max Nm	Ordering No.
15/16	52	18	58	750	520	4027 5008 40
1	56	18	58	760	560	4027 5008 41

# End fittings BWR

## Flared End

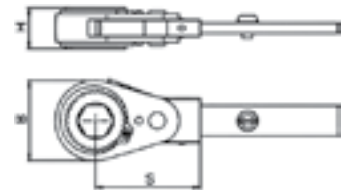


BWR 20/35							
● mm	B mm	H mm	S mm	W mm	g	max Nm	Ordering No.
8	18	6	9	6	20	16	4027 5003 60
10	21	7	10.5	7	25	16	4027 5003 61
11	21	7	10.5	8.5	25	20	4027 5003 62
12	25	8	12.5	9	32	25	4027 5003 63
13	25	8	12.5	10	32	25	4027 5003 64
14	25	8	12.5	11	32	25	4027 5003 65
15	29	8	14.5	11	35	25	4027 5003 66
17	31.5	10	15.75	14	35	50	4027 5003 67
19	34	10	17	15.8	40	50	4027 5003 68
21	34	10	17	17	42	50	4027 5003 69
24	38	14	20	18	60	60	4027 5003 70

BWR 20/35							
● in	B mm	H mm	S mm	W mm	g	max Nm	Ordering No.
3/8	21	7	12	8	25	16	4027 5008 50
7/16	21	7	12	8.5	25	20	4027 5008 51
1/2	25	8	14	10	32	25	4027 5008 52
9/16	29	8	14	11	35	25	4027 5008 53
5/8	31.5	10	16	14	35	50	4027 5008 54
11/16	34	10	17.5	15.8	40	50	4027 5008 55
3/4	34	10	18	17	40	50	4027 5008 56

BWR 100							
● in	B mm	H mm	S mm	W mm	g	max Nm	Ordering No.
5/8	32	10	18.5	12	75	50	4027 5008 72
11/16	32	12	18.5	14	78	50	4027 5008 73
3/4	36	12	19.5	16	90	50	4027 5008 74

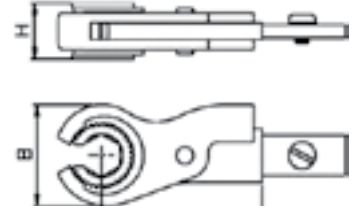
## Hexagon Ratchet



BWR 20/35						
● mm	B mm	H mm	S mm	g	max Nm	Ordering No.
8	28	13.5	44	80	25	4027 5003 90
10	28	13.5	44	80	25	4027 5003 91
11	28	13.5	44	80	25	4027 5003 92
12	28	13.5	44	80	25	4027 5003 93
13	28	13.5	44	80	25	4027 5003 94
14	32	16	47	120	35	4027 5003 95
15	32	16	47	120	35	4027 5003 96
16	39	20	51	180	85	4027 5003 97
17	39	20	51	180	85	4027 5003 98
18	39	20	51	180	85	4027 5003 99
19	39	20	51	180	85	4027 5004 00
21	45	23	57	257	85	4027 5004 01
22	45	23	57	257	85	4027 5004 02

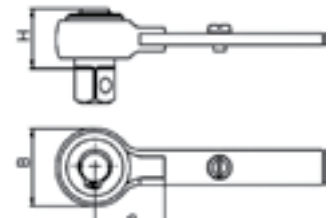
BWR 100						
● mm	B mm	H mm	S mm	g	max Nm	Ordering No.
15	39	20	51	200	70	4027 5004 20
16	39	20	51	200	70	4027 5004 21
17	39	20	51	200	70	4027 5004 22
18	39	20	51	200	100	4027 5004 23
19	39	20	51	200	100	4027 5004 24

## Open Hexagon Ratchet



BWR 20/35							
● mm	B mm	H mm	S mm	W mm	g	max Nm	Ordering No.
8	30	16.5	48	5.1	85	15	4027 5004 50
9	30	16.5	48	5.6	85	15	4027 5004 51
10	30	16.5	48	6.3	85	15	4027 5004 52
11	30	16.5	48	6.3	85	15	4027 5004 53
12	36	16.5	81	7.1	190	18	4027 5004 54
13	36	16.5	81	7.6	190	18	4027 5004 55
14	36	16.5	81	8	190	18	4027 5004 56
17	42	20.5	73.5	10	260	18	4027 5004 57

## Fixed Square End



BWR 20/35						
■ in x mm	B mm	H mm	S mm	g	max Nm	Ordering No.
1/4 x 30	24	30	21	65	25	4027 5004 80
1/4 x 70	24	70	21	115	25	4027 5004 81
3/8 x 30	24	30	21	65	85	4027 5004 82
3/8 x 70	27	70	21	120	85	4027 5004 83
1/2 x 35	24	35	21	75	85	4027 5004 84
1/2 x 70	24	70	21	145	85	4027 5004 85

BWR 240						
■ in x mm	B mm	H mm	S mm	g	max Nm	Ordering No.
1/2 x 40	34	40	31	300	240	4027 5004 98
1/2 x 70	34	70	31	330	240	4027 5004 99

BWR 750						
■ in x mm	B mm	H mm	S mm	g	max Nm	Ordering No.
3/4 x 70	48	70	58	775	750	4027 5005 11

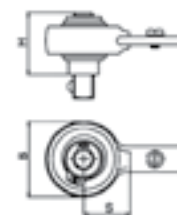
BWR 100						
■ in x mm	B mm	H mm	S mm	g	max Nm	Ordering No.
3/8 x 40	32	40	30	75	100	4027 5004 90
3/8 x 70	32	70	30	240	100	4027 5004 91
1/2 x 40	32	40	30	175	100	4027 5004 92
1/2 x 70	32	70	30	245	100	4027 5004 93

BWR 440						
■ in x mm	B mm	H mm	S mm	g	max Nm	Ordering No.
1/2 x 40	48	40	58	600	440	4027 5005 04
1/2 x 70	48	70	58	630	440	4027 5005 05
3/4 x 70	48	70	58	689	440	4027 5005 06

BWR 1300/2000						
■ in x mm	B mm	H mm	S mm	g	max Nm	Ordering No.
3/4 x 70	73	70	58	1400	1000	4027 5005 16
1 x 70	73	70	58	1700	2000	4027 5005 17

# End fittings BWR

## Ratchet End



BWR 20/35							
in x mm	B mm	H mm	S mm	g	max Nm	Ordering No.	
1/4x40	36	40	21	145	25	4027 5005 25	
1/4x70	38	70	21	165	25	4027 5005 26	
3/8x40	36	40	21	145	85	4027 5005 27	
3/8x70	36	70	21	170	85	4027 5005 28	
1/2x45	36	45	21	150	85	4027 5005 29	
1/2x70	36	70	21	195	85	4027 5005 30	

BWR 100							
in x mm	B mm	H mm	S mm	g	max Nm	Ordering No.	
3/8x40	48	40	30	270	100	4027 5005 36	
3/8x70	48	70	30	31	100	4027 5005 37	
1/2x45	48	40	30	285	100	4027 5005 38	
1/2x70	48	70	30	320	100	4027 5005 39	

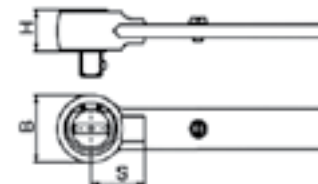
BWR 240							
in x mm	B mm	H mm	S mm	g	max Nm	Ordering No.	
1/2x45	48	45	31	300	240	4027 5005 44	
1/2x70	48	70	31	330	240	4027 5005 45	

BWR 440							
in x mm	B mm	H mm	S mm	g	max Nm	Ordering No.	
3/4x70	72	70	58	1100	440	4027 5005 50	

BWR 750							
in x mm	B mm	H mm	S mm	g	max Nm	Ordering No.	
3/4x70	72	70	58	1250	750	4027 5005 55	

BWR 1300/2000							
in x mm	B mm	H mm	S mm	g	max Nm	Ordering No.	
3/4x70	85	70	58	1700	1000	4027 5005 60	
1x80	85	80	58	2000	2000	4027 5005 61	

## Reversible Ratchet End



BWR 20/35							
in	B mm	H mm	S mm	g	max Nm	Ordering No.	
1/4	25	26	21	55	25	4027 5005 70	
3/8	36	35	21	130	85	4027 5005 71	
1/2	36	40	21	135	85	4027 5005 72	

BWR 100							
in	B mm	H mm	S mm	g	max Nm	Ordering No.	
3/8	36	35	30	165	100	4027 5005 77	
1/2	36	40	30	175	100	4027 5005 78	

BWR 240							
in	B mm	H mm	S mm	g	max Nm	Ordering No.	
1/2	36	40	31	285	240	4027 5005 83	

BWR 440							
in	B mm	H mm	S mm	g	max Nm	Ordering No.	
3/4	68	56	58	1100	440	4027 5005 88	

BWR 750							
in	B mm	H mm	S mm	g	max Nm	Ordering No.	
3/4	68	70	58	1250	750	4027 5005 93	

BWR 1300/2000							
in	B mm	H mm	S mm	g	max Nm	Ordering No.	
3/4	68	70	58	1500	1000	4027 5005 98	
1	68	70	58	1500	1000	4027 5005 99	

## Belknap Adapter



BWR 20/35			
Type	S mm	g	Ordering No.
J-Shank	24	68	4027 5009 50
Y-Shank	29	65	4027 5009 60

BWR 240			
Type	S mm	g	Ordering No.
Y-Shank	29	193	4027 5009 62
X-Shank	31	211	4027 5009 71
Z-Shank	56	438	4027 5009 81

BWR 750			
Type	S mm	g	Ordering No.
X-Shank	31	455	4027 5009 73
Z-Shank	56	686	4027 5009 83

BWR 100			
Type	S mm	g	Ordering No.
J-Shank	24	85	4027 5009 51
Y-Shank	29	82	4027 5009 61
X-Shank	31	100	4027 5009 70
Z-Shank	56	327	4027 5009 80

BWR 440			
Type	S mm	g	Ordering No.
Y-Shank	29	279	4027 5009 63
X-Shank	31	297	4027 5009 72
Z-Shank	56	524	4027 5009 82

BWR 1300 / 2000			
Type	S mm	g	Ordering No.
Z-Shank	56	924	4027 5009 84

## Setting Key BWR

	g	Ordering No.
Setting key BWR 20 up to 100	97	4027 5006 10
Setting key BWR 240	164	4027 5006 11
Setting key BWR 440	428	4027 5006 12
Setting key BWR 750 up to 2000	603	4027 5006 13



## Setting Key SWR

	g	Ordering No.
Setting key set SWR-30	94	4027 5030 00
Setting key set SWR-60	171	4027 5030 01
Setting key set SWR-110	429	4027 5030 02



You will find a wide range of sockets for use with SWR wrenches in the Atlas Copco PMI 9833 2018 01 "Sockets and Bits for Industrial Power Tools".

## ***COMMITTED TO SUSTAINABLE PRODUCTIVITY***

We stand by our responsibilities towards our customers.  
towards the environment and the people around us.  
We make performance stand a test of time.  
This is what we call - Sustainable Productivity.

[www.atlascopco.com](http://www.atlascopco.com)

*Atlas Copco*